

**Volunteers in Medicine - San Diego  
El Cajon, California**

The Mission of Volunteers in Medicine (VIM) promotes and guides the development of a national network of free clinics, emphasizing the use of retired medical and lay volunteers to care for the “working uninsured” within a culture of caring so that everyone in a community has access to health care.

The building has been designed as a prototype for San Diego County with the El Cajon site envisioned as the first of ten. The idea of a culture of caring extends from the buildings program to the building itself. The owner and design team elected to follow the USGBC’s LEED rating system as both a design tool and a quality control measure. On a community wide basis, we have connected to alternate forms of transit, lessened our expected heat island effect, conserved water and energy, limited our construction waste output and raw material consumption .

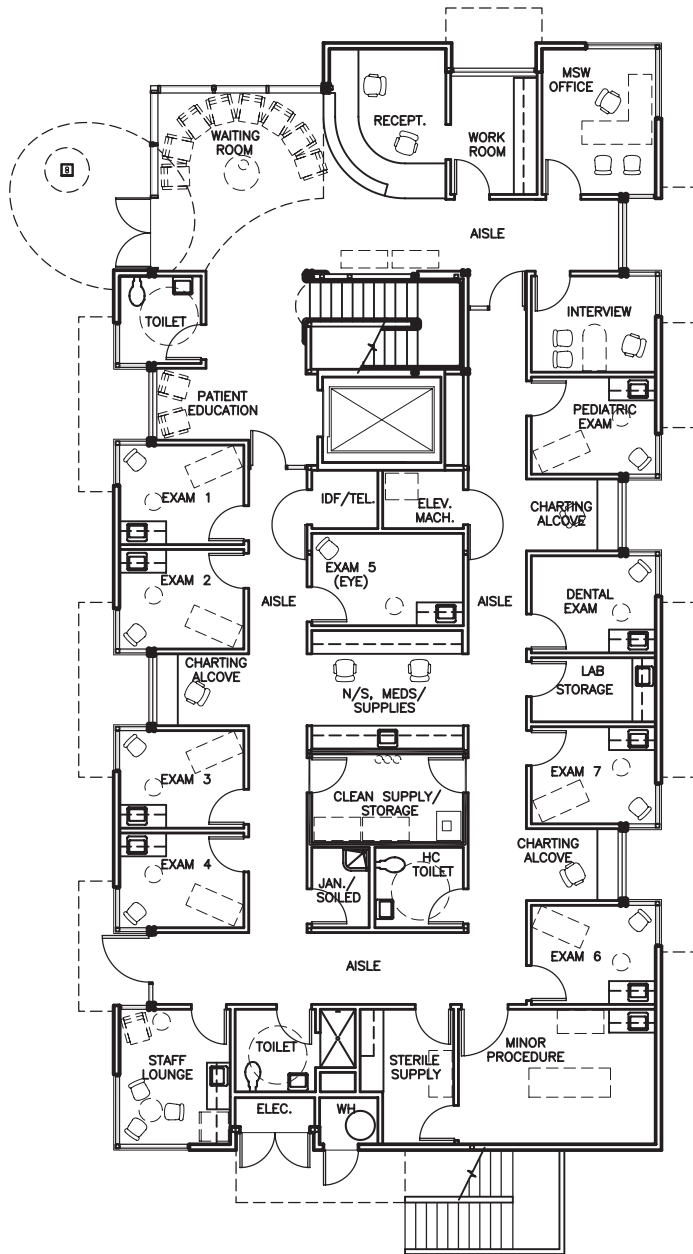
On a smaller building scale, we have made every effort to create a healthy place to work and receive services. Most importantly we’ve acted to limit the amount of chemicals off-gassing into the space as well as increasing the amount of daylight and fresh air.



**Project Summary**

- New 8,350 square foot freestanding building
- 11 exam rooms including eye and dental
- Minor procedures room
- Support offices
- Sustainable building design





At substantial completion of the project we anticipate successful compliance with the following LEED credits:

**Sustainable Sites Erosion & Sedimentation Control**

- SS1: Site Selection
- SS4: Alternative Transportation:  
Public Transportation Access  
Bicycle Storage & Changing Rooms  
Alternative Fuel Vehicles
- SS6.2: Stormwater Management Treatment
- SS7.2 Landscape & Exterior Design to Reduce Heat Islands Roof
- SS8: Light Pollution Reduction

**Water Efficiency**

- WE1.1: Water Efficient Landscaping Reduce by 50%
- WE3.1: Water Use Reduction 20% Reduction

**Energy & Atmosphere**

- EA1: Optimize Energy Performance
- EA3: Additional Commissioning
- EA4: Ozone Depletion
- EA5: Measurement & Verification

**Materials & Resources**

- MR2.1: Construction Waste Management Divert 50%
- MR3: Recycled Content Specify 5% (post-consumer + 1/2 post-industrial) Specify 10% (post-consumer + 1/2 post-industrial)
- MR6: Rapidly Renewable Materials

**Indoor Environmental Quality**

- EQ3.1: Construction IAQ Management Plan During Construction
- EQ4: Low-Emitting Materials Adhesives & Sealants  
Paints  
Carpet  
Composite Wood & Agrifiber
- EQ7.1: Thermal Comfort Comply with ASHRAE 55-1992
- EQ8.1: Daylight & Views Daylight 75% of Spaces

**Innovation & Design Process**

- ID2: LEED™ Accredited Professional